



LACROSSE  
FIELD HOCKEY  
ATHLETIC WEAR **SUBLIMATED**

# FULL DYE SUBLIMATED ATHLETIC WEAR LACROSSE FIELD HOCKEY



## MEN'S GAME UNIFORMS

JERSEYS AVAILABLE IN PRO-FIT, PRO-LINE AND VARSITY PATTERNS

SHORTS AVAILABLE IN PRO-LINE AND VARSITY PATTERNS- WITH OR WITHOUT POCKETS

REVERSIBLE JERSEYS AND SHORTS AVAILABLE IN DOUBLE OR SINGLE PLY PATTERNS

## WOMEN'S GAME UNIFORMS

JERSEYS AVAILABLE IN LONG SLEEVE, SHORT SLEEVE, CAP SLEEVE AND SLEEVELESS PATTERNS

SHORTS AND KILTS AVAILABLE IN PRO-LINE AND VARSITY PATTERNS

REVERSIBLE JERSEYS, SHORTS AND KILTS AVAILABLE IN DOUBLE OR SINGLE PLY PATTERNS



## FABRIC OPTIONS



**Pointelle Four Way Stretch Mesh**  
Super Soft Small Hole Mesh - Texturized  
Semi-Dull Yarn Lustre - Moisture  
Management Properties



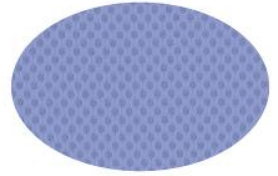
**Performance Mock Mesh**  
Lightweight and Comfortable Flat  
Bacl Mock Mesh - Moisture  
Management Properties



**Performance Micro Poly**  
Super Soft Flat Knit with a "Silky"  
Feel - Moisture Management Properties



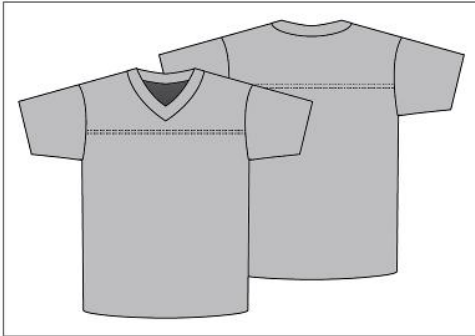
**Body Flex Mirco Poly/Spandex**  
4 Way Stretch - Flat Knit Finish -  
Bright Yarn Lustre - Moisture  
Management Properties



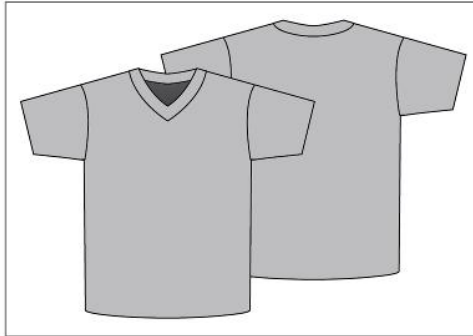
**Porthole Mesh**  
Extra Large hole mesh -  
Matte yarn finish -  
Moisture Management

## JERSEY PATTERNS

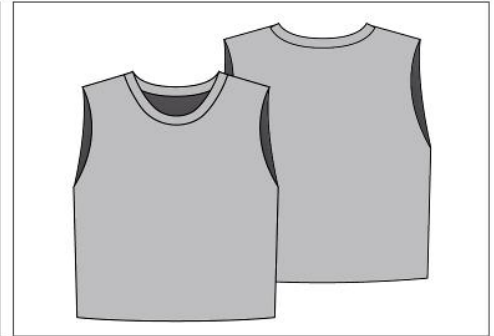
### Men's Pro-Line Jersey Pattern



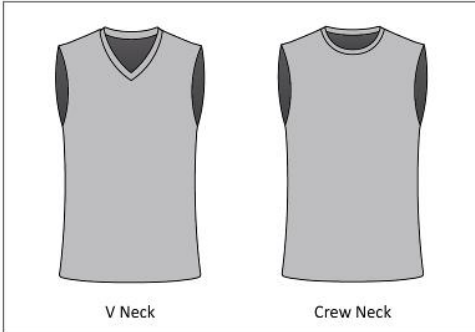
### Men's Varsity Jersey Pattern



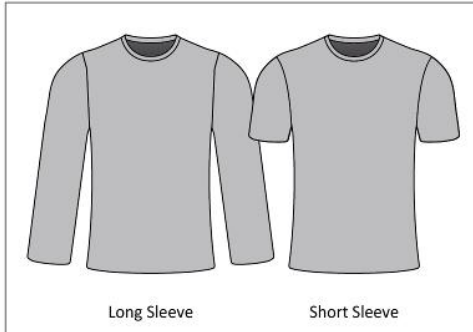
### Men's Lacrosse Sleeveless Jersey Pattern (Available standard or wide shoulder)



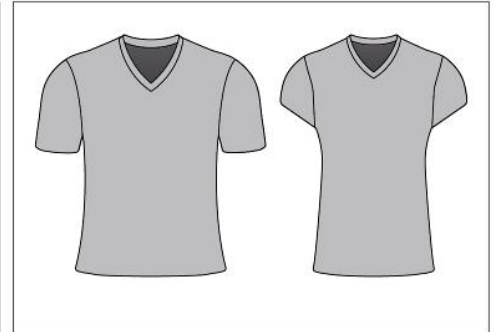
### Varsity Sleeveless Jersey Pattern (Available standard or wide shoulder)



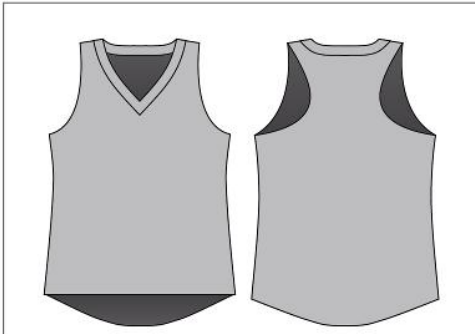
### Shooting Shirts (Available Loose or Compression fit)



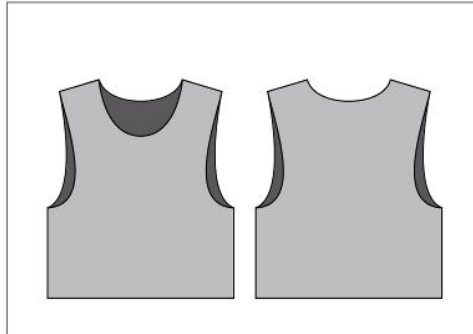
### Women's Varsity Jersey Pattern (Available Short or Cap Sleeve)



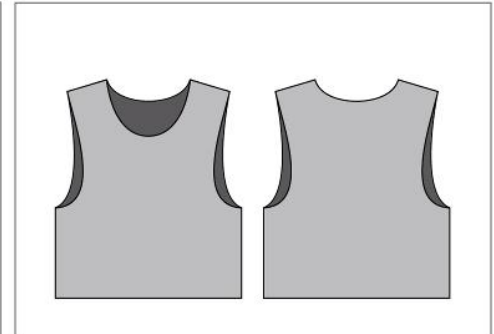
### Women's Varsity Sleeveless Jersey Pattern (Available Standard Back or Racerback)



### Men's & Women's Pinnies (Available Standard or Wide Shoulder)



### Double-Ply Reversible Practice Pinnie (Available Overseas ONLY)

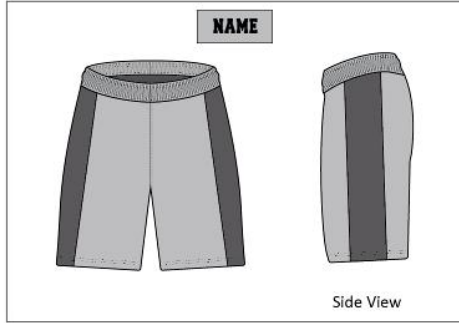


## SIZING

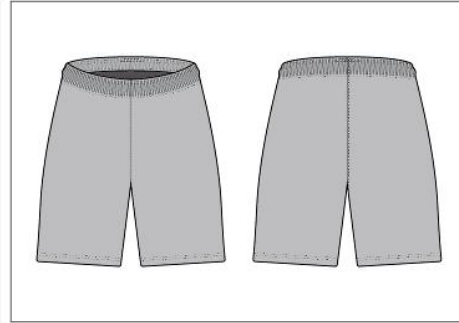
All Jerseys available in Mens, Womens, Youth Boys, and Youth Girls sizing.

**SHORT PATTERNS**

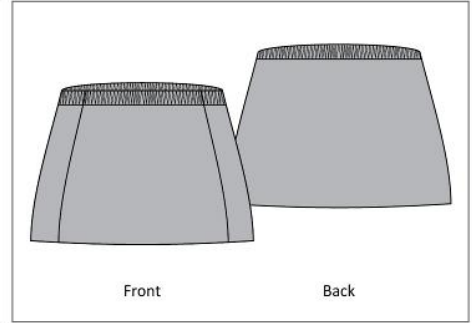
Pro-Line Short Pattern with side insert  
Optional waistband Patch Available



Varsity Short Pattern  
(available with or without pockets)



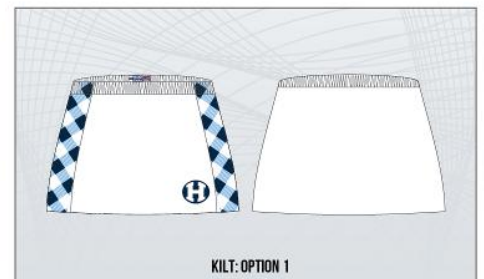
Kilt



**SIZING**

All Patterns available in Mens, Womens, Youth Boys, and Youth Girls sizing.

**MOCKUPS**







[WWW.R2GSPORTS.COM](http://WWW.R2GSPORTS.COM)

TEL: (732)-348 0148

TOLL FREE: 1(844) R2GLORY (724-5679)

EMAIL: [INFO@R2GSPORTS.COM](mailto:INFO@R2GSPORTS.COM)